

# UPECView Installation Guide

---

This guide describes the installation procedure for the UPECView software bundled with Sensima's UPEC line of Eddy current instruments. The software comes preinstalled on the display device (tablet, laptop, etc. depending on version). These instructions allow you to install the software on other devices.

## 1. OS Compatibility

The software runs under Windows, is tested and developed for Windows 8.1 and is certified to work on a selected set of display devices (list on request). In general, it should run smoothly on Windows 7 through 10.<sup>1</sup> The software is compiled for 32 bits and will therefore run on both 32 and 64 bit flavours of the OS.

## 2. Step-by-step installation instructions

The installation procedure is extremely straight-forward. The user only has to follow the installation wizard. Some steps may however be somewhat disconcerting (especially the installation of the additional drivers) and the procedure is thus described below step-by-step.



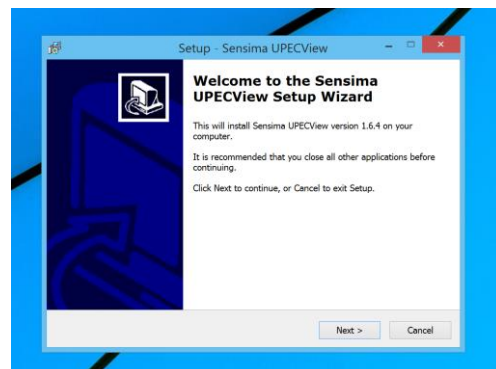
### IMPORTANT

Please install software and device drivers BEFORE connecting the UPEC tester to your PC or tablet.

Note however that from Windows 8 onwards, Windows will attempt to download the latest drivers from the internet automatically. In general, this is perfectly fine and works out of the box, but there may be incompatibilities between the drivers shipped with UPECView and the newer ones and we therefore recommend to install the software before connection the device.

1. Open the installation wizard by double-clicking on the UPECView x.y.z.w Setup.exe program on the USB key or downloaded (x.y.z.w is the software version, e.g. 1.6.4.1). The following window should be displayed.

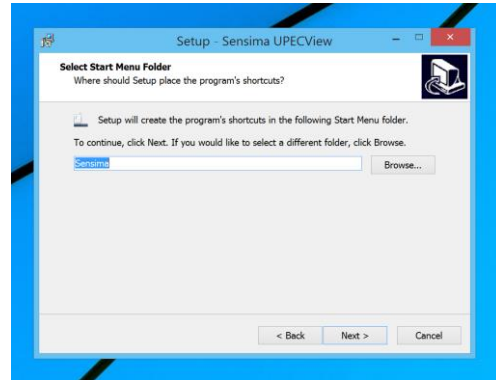
It is recommended to copy the installation executable to your local disk before starting the installation (e.g. to your Documents folder)



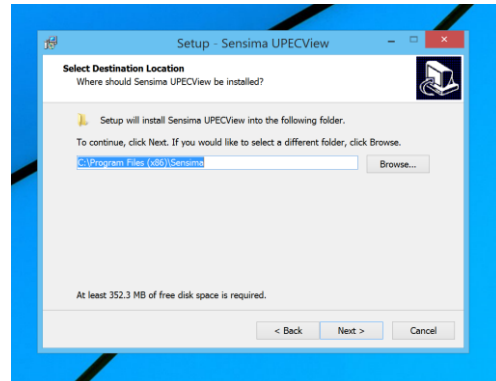
---

<sup>1</sup> Certain functions such as tile creation for instance do not make sense under Windows 7.

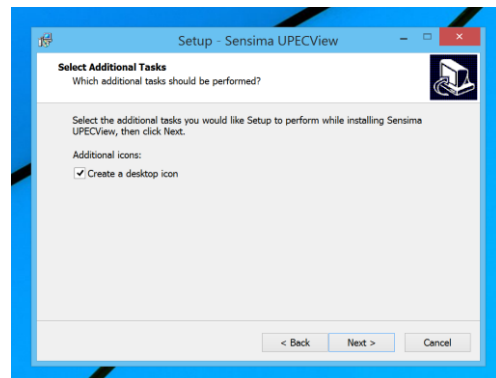
2. Choose the “Start Menu Folder” under which you want the program to be listed (default: Sensima)



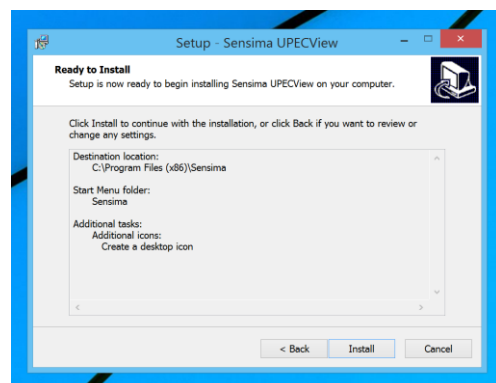
3. Choose where the program should be installed. It is recommended to leave the default setting since this allows to easily upgrade UPECView to a newer version without risking conflicts.



4. The creation of a desktop icon is recommended (default).

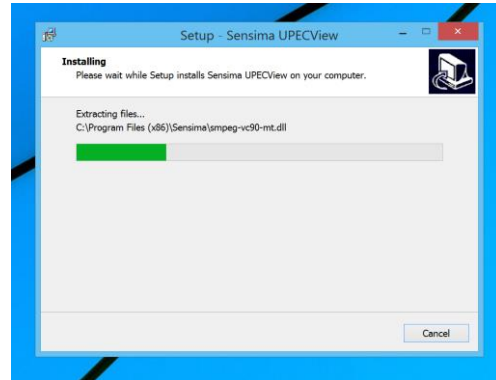


5. A summary of the procedure is displayed before performing it.



- The files are copied to your disk with the progress indicated.

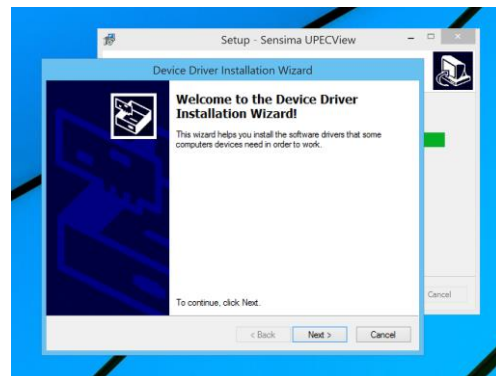
At the end of the copying, the installer may display several popup windows indicating the installation of Microsoft software components.



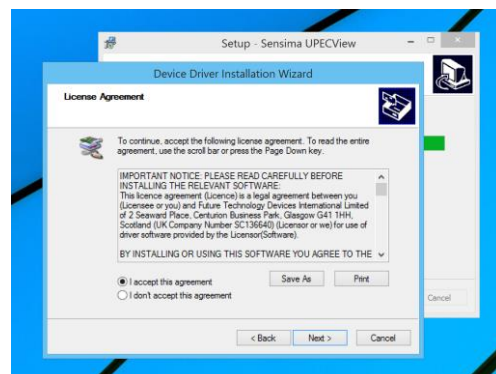
- The installation of the first set of communication drivers begins: a popup window with the special driver wizard appears. Those drivers from FTDI ([www.ftdichip.com](http://www.ftdichip.com)) are necessary to some devices, including legacy ones (delivered before 2015).



- Follow the wizard's instructions



- Accept the license agreement from FTDI. The drivers' installation starts. If the drivers were already installed on your system, the next window appears immediately.

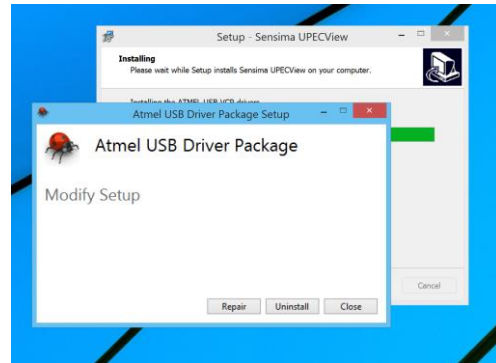


10. Click “Finish” at the end of the FTDI drivers’ installation.

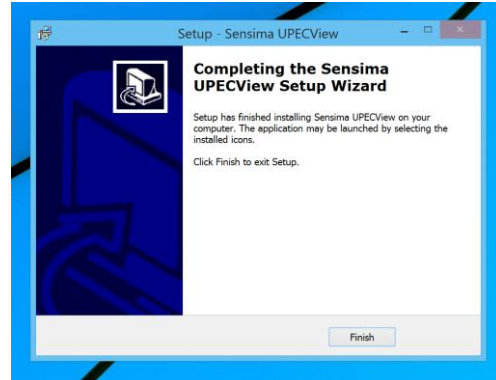


12. A popup window for the installation of the Atmel USB Driver Package appears. Follow the instructions from the driver installation wizard. During the process, you may be asked to trust drivers from Atmel ([www.atmel.com](http://www.atmel.com)). It is recommended to choose the “always trust drivers from Atmel” option.

13. If the Atmel USB drivers were already present on your system, the following window is displayed, giving you the opportunity to uninstall or repair them. Unless you have a problem with those drivers, click “Close” since you do not want to change anything.




14. The installation is complete.




### 2.1. Additional notes

The drivers can also be found in the `drivers` directory on the USB key shipped with the UPEC device.

## 3. Starting the software

- Connect your UPEC tester to the device you have installed the software on.
- Start UPECView:
  - From the Windows desktop, double-click on the UPECView icon ()

- For Windows 8+, press the Windows key () type U P E C and click on the UPECView item in the list.

## 4. License and further assistance

In layman terms, you are granted a license to install and use as many copies of the software as you need and this on as many devices as a reasonable use requires.

Further assistance and support is available from Sensima inspection. Depending on your service plan, some of it may be included.

## 5. See also

The following documents contain further information about UPECView and the UPEC line of eddy current testers:

- UPEC Inspection Kit Quick Start Guide (Sensima inspection)
- UPECView User Guide (Sensima inspection)
- UPECView Installation Guide (Sensima inspection)

### *Document revisions*

2015-12-14 rev-001 (original)

Sensima Inspection  
31, av. du Mont Blanc, CH-1196 Gland, Switzerland  
+41 22 364 49 20 – [info@sensima.com](mailto:info@sensima.com) – [www.sensimainsp.com](http://www.sensimainsp.com)

The technical content of this document can be subject to change. All rights reserved