

UPEC — Ultraportable USB EC Tester

Sensima inspection's "Ultraportable USB Eddy Current Tester" (UPEC-EAHVFJ) is very compact and easy-to-use, yet it integrates advanced features such as multifrequency, multiplexing, probe identification, digital communication.

Features

- Absolute Eddy current tester
- Single or dual probe (absolute or differential)
- Plug-and-play: connect to USB and start measuring
- Multifrequency (with integrated multiplexer)
- Ready for self-test on provided notches
- Directly compatible with most of your legacy Eddy current probes

Technical details

- Inspection method:** Absolute Eddy current
(direct impedance measurement)
- Frequencies:** Up to 3 frequencies (multiplexed)^a
- Acquisition rate:** 250, 500, 1000 Hz (single channel)
- Power supply:** Powered by USB (5 V)
- Dimensions:** 45 × 60 × 18 mm
(1.8 × 2.4 × 0.7 in)
- Probe connector:** Fischer 4-pin connector, 1032 series
(see customization below)
- USB connector:** mini-USB
- Software:** UPECView 1.x
for Windows or Android
- Soft availability:** Our website or GooglePlay
- OS requirements:** Windows 7 and later^b
Android 4.0 and up

Customization

- Other communication protocols (RS-232, Ethernet, RS-422 for long-distance, ...)
- Other connectors for compatibility with your set of probes
- Can be delivered without packaging to be embedded in another inspection system (e.g. an ROV)

^aHigh, medium and low with an approximate ratio of 2 between each. The central frequency depends on the inductance of the probe and is selected during balancing.

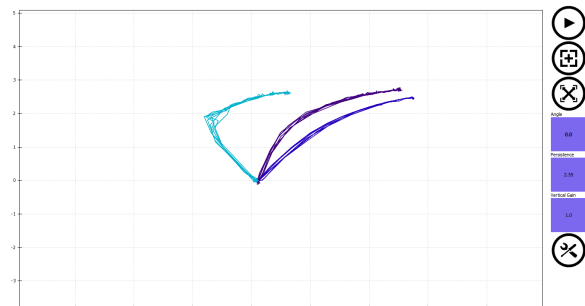
^bThe acquisition software should run under Windows XP SP2, but some reporting functions may not be available.



Compact and robust:
Rugged Fischer and Amphenol connectors,
anodized Aluminium body.

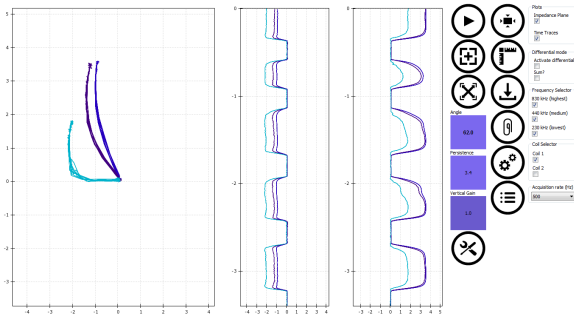


Versatile:
Compatible with most of your legacy probes.
Custom probes on demand.



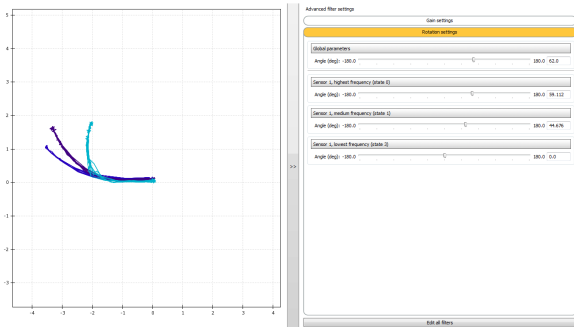
Intuitive and easy-to-use software:
Ready to measure within seconds.





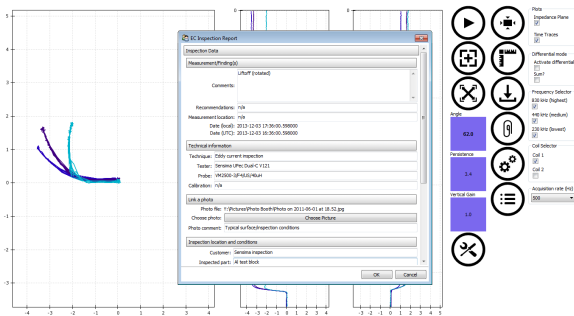
All functions at your fingertips:

All advanced functions are available in one click or tap. Traces can be displayed or hidden.



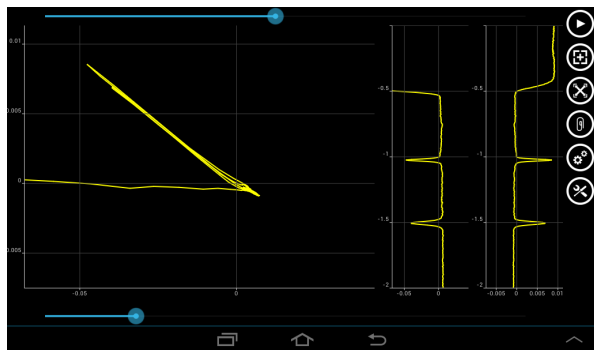
Advanced gain and rotation settings:

Phase angle and gains (horizontal and vertical) can be altered on each channel individually.



Report generation:

A report is generated each time the data are saved.



Android:

Get it for your mobile Android device from Google play.

UPECView Acquisition Software

The software has been optimized for small screen tactile devices, but it can be used on a normal PC as well.

Balancing: Fast standard balancing and possibility to auto-tune the internal gains for higher accuracy.

Persistence: Adjust the persistence time with a single drag. Can also be adjusted after the acquisition has been stopped to "go back in time".

Differential: Optionnally activate the differential mode for dual coil acquisition. The differential mode can display the sum of the two signals.

Traces: Display time traces next to the Lissajou plot.

Reporting: Generate a Microsoft Word and/or HTML report next to your saved data.^a The report contains all the data processing settings.

Ordering information

Product number: UPEC-EAHVFJ

Related products

- Submarine versions (UW0100-ECT-2CJM3GI, UW1000-ECT-2E75FYB)
- Encoder version for xy-scanning (in development)
- Specific probes on demand

^aReporting feature is currently only available for Windows software. Word generation may not be available on Windows XP.

